



# DCI Concrete Dye

For All Your  
Decorative Concrete  
Supply Needs...



Raincloud



Coffee Brown



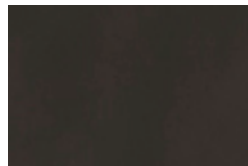
English Red



Blueberry



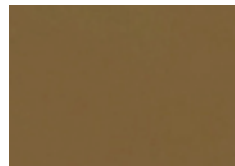
Brick Red



Jet Black



Aztec Brown



Oakwood



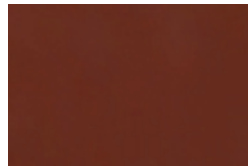
Toasted Wheat



Burnt Orange



Red Roof



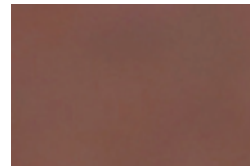
Burnt Rouge



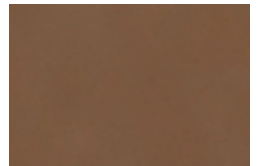
Rust



Pumpkin Spice



Cinnamon



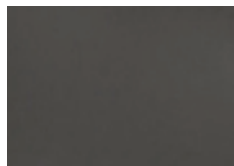
Sorrel



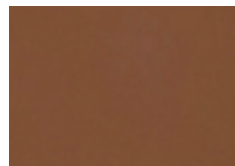
Chestnut



Jacinthe



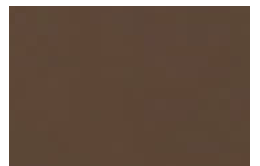
Charcoal



Sienna



Evergreen



Ash Brown



Poppy Red



Malayan Buff



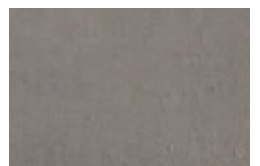
Mojave Dunes



Sepia



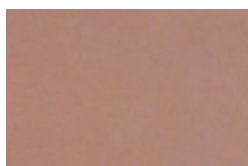
Rustic Brown



Stormy Gray



Carnation Pink



Desert Pink



Powder Blue



Smokey Topaz



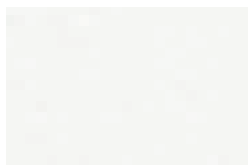
Sunset Tan



Wintergreen



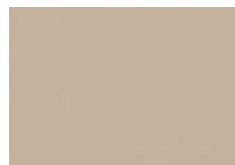
Basic Red



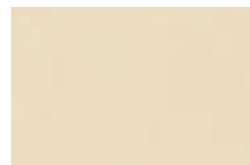
Basic White



Basic Yellow



Tan



Buff



Khaki

Direct Colors Inc. | 430 East 10th Street | Shawnee, Oklahoma 74801  
405.275.6657 | 877.255.2656

[www.DirectColors.com](http://www.DirectColors.com)



# DCI Concrete Dye



## Technical Data

### Description:

DCI Concrete Dye creates a new look to your tired concrete slab. Add your own acetone to produce the quantities advertised. DCI Concrete Dye is a translucent dye that creates a vibrant topical layer of color that will not crack or peel. When used properly, DCI Concrete Dye will give you true, consistent coloration across the surface. For more color diversity, apply two or more dye colors. DCI Concrete Dye must be combined with acetone EXACTLY as per the directions provided. All surfaces must be sealed as soon as possible to preserve the color and integrity of the application.

DCI™ Concrete Dye is an excellent color alternative for surfaces that cannot be acid stained for whatever reason. Concrete Dye can also be used in stencil or upright applications due to the extremely fast drying time.

DCI™ Concrete Dye will not cover up all blemishes on concrete surfaces such as gasoline, grease, oil, paint or drywall. Concrete Dye should be applied to smooth surfaces. Broomed or excessively rough concrete may not be good candidates for this product.

### Coverage:

DCI Concrete Dye will cover approximately 400 – 600 square feet per gallon, depending on the application and porosity of your concrete. For best results, seal the surface before applying the dye, especially when working with a dye color that is lighter than the concrete itself. Three or more dye coats are generally required to achieve most colors. Each additional coat will produce a darker, more intense color.

### Surface Preparation:

The concrete must be fully-cured and free of debris, dirt and oils, flaking sealers, adhesives or anything that might prevent the color from bonding with your surface. If you do not know the history of your slab, preparing a test patch or sample would be highly advisable. For older or exposed concrete, the surface must be completely intact with no exposed aggregate. This will ensure that your final color will be as consistent as possible. As a final step, clean the floor with a solution of organic degreaser and water. Wash with clear water and leave to dry.

For best results, apply a thin coat of concrete sealer, preferably Sprayable Satin Finish Sealer, to the surface prior to applying the concrete dye. Because the dye particles are very small, the sealer acts to enhance color visibility particularly when applying the lighter dye colors.

### Mixing Instructions:

DCI Concrete Dye comes in a dry form to be mixed locally in acetone. For every gallon of dye purchased, a gallon of acetone will be needed. Empty the concrete dye packet into the appropriate amount of acetone, and shake for 30 seconds. **USE EXTREME CAUTION! ACETONE IS HIGHLY FLAMMABLE! DO NOT USE ANY TYPE OF ELECTRICAL MIXER.** Shake the mixture to thoroughly combine. Allow to stand for approximately 30 minutes before applying. Pour the dye into the acetone sprayer and apply. Agitate regularly while applying to keep the particles in suspension and to ensure an even coat.

### Application:

The appearance of the finished product is very much influenced by the manner in which the dye is applied. Shake the mixture in the sprayer frequently to ensure an even, consistent color during the application. The dye should be sprayed going right to left, then north to south. Try not to spray on too thick. The dye will dry almost instantly. The more layers you apply the darker the color will become. Apply as thin a coat as possible to ensure color quality and appearance. Generally, 3-4 coats of dye is sufficient for any job, but more dye can be applied if needed or desired. Avoid pooling on the floor. Allow product to dry for 1-2 hours. Use a soft cloth or dust mop to lightly remove excess colorant or residue from the surface before sealing. Floors finished with DCI Concrete Dye should be sealed prior to allowing foot traffic of any kind.

### Sealing the Surface:

Direct Colors offers both solvent and water-based sealers suitable for any concrete project. Sealers can be applied with either an applicator or a sprayer; however, some solvent-based sealers cannot be used in all US states. Sprayable Satin Finish sealer is recommended for DCI Concrete Dye application whenever possible because an applicator is not required. If applying with an applicator, select a short- nap roller and gently roll the sealer onto the surface. With water-based sealers, a spray and back roll technique is preferred. Generally, the thinner the sealer application, the stronger and more durable the sealer will become. Applying a thick coat will result in an inconsistent finish with tacky areas that may not set-up correctly. Depending on the sealer selected, leave the solvent-based sealers to dry for at least 4-6 hours between coats. Water-based sealers should be given at a minimum 24 hours to set-up be-

tween coats. The surface should be completely clear and dry before applying an additional coat.

For best results, concrete wax should be applied to all interior floors sealed with an acrylic sealer and maintained over time as needed.

Exterior surfaces sealed with an acrylic-based sealer should be resealed every 2-3 years depending on exposure and weather conditions.

### Storage:

Tightly seal and store in a cool, dry place. Shelf life for the product is approximately 24 months.

### Caution:

**KEEP OUT OF REACH OF CHILDREN.** After mixing with Acetone, DCI Concrete Dye is highly flammable and should not be used in an enclosed area without excellent ventilation to the outside. Wear eye goggles, gloves, and dust mask during application. Extinguish all open flames, including pilot lights, lighters, cigarettes, heaters and electrical tools, before use. **DO NOT MIX DCI CONCRETE DYE WITH AN ELECTRIC MIXER OF ANY KIND.** Do not ingest or avoid breathing fumes.

### Warranty:

Because the conditions of use and application of our products are beyond the control of Direct Colors Inc., Direct Colors makes no warranty regarding workmanship and other variables that do not involve the performance of our products. Buyer's sole remedy shall be the purchase price paid by the user or buyer for the quantity of the Direct Colors product involved. The sellers and manufacturers obligations under this warranty shall be limited to refunding the purchase price of that portion of the material proven defective. Seller and/or manufacturer will not be liable for special, incidental or consequential damages, including for delays or lost profits.



Direct Colors Inc.  
430 E. 10th St.  
Shawnee, OK 74801  
877.255.2656

[www.DirectColors.com/concretedye](http://www.DirectColors.com/concretedye)