



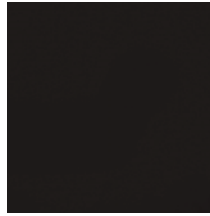
Liquid Colored Antique Color Chart

Direct Colors Liquid Colored Antique adds depth and dimension to your stamped or stenciled concrete.

Our spray-on product accents and highlights any textured surface creating a multi-toned look on your outdoor patio, driveway or walkways.



Plum



Black



Cumin



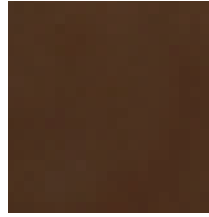
Cinnabar



Pumpkin



Yukon Gold



Aztec Brown



Fiery Orange



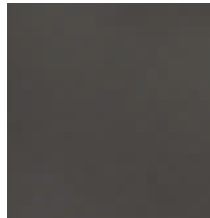
Nutmeg



Crimson



Tweed



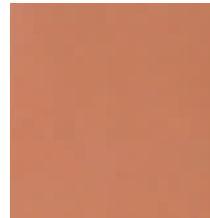
Charcoal



Fern Green



Milano Red



Sunset Tan



Driftwood



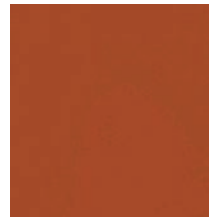
Blue



Wheat



White



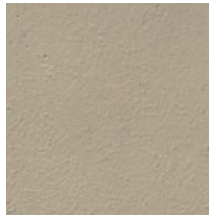
Russet



Tangerine



Cafe Royale



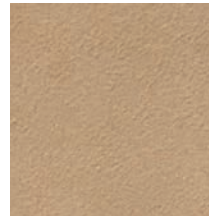
Buff



Gray



Auburn



Tan



Chocolate



Khaki



Liquid Colored Antique Technical Data

Direct Colors Liquid Colored Antique can be used on dry or wet concrete surfaces as a coloring or antiquing agent. On flat surfaces, the pigment will collect where you spray it most heavily. On textured or stamped surfaces, the pigment will flow to the lowest part of the impression, adding accents and restoring color.

Liquid Colored Antique can also be used to even out discoloration in small batches of overlay or to correct over-hydration color bleed.

Standard powder releases use percentage of pigment load to control the color. Liquid Colored Antique works under similar princi-

ples, but the dispersion vehicle, rather than inhibiting the placement of pigment for lighter shades, evaporates to leave only the pigment.

Color shading control is fully in the hands of the applicator. The more an area is saturated, the more the pigment will be dispersed providing a virtually infinite range of color options and shades.

By using separate applications of different colors, unique and personal effects can be created, allowing the contractor to more easily tailor a project to the expectations of the client. Liquid Colored Antique can be applied to previously sealed surfaces to restore integrally-colored or stained outdoor concrete. While designed for use with textured or stamped surfaces, Liquid Colored Antique can be used on smooth concrete and is an excellent alternative to acid stain on older, more porous outdoor slabs or concrete that cannot be stained by another means.

Liquid Colored Antique contains a dispersant to maintain even distribution of pigment particles throughout the stain, but settling will occur. Stir or shake vigorously before pouring into the sprayer, and regularly agitate the mixture to prevent settling in the sprayer. Our product can also be applied with a sponge or sponge



brush to create different textures and appearance on the surface.

The coverage rate for Liquid Colored Antique is influenced by several factors including surface porosity, existing surface color, desired color saturation among others. The average coverage rate is 200-300 sq. ft. per gallon. All antiqued surfaces must be sealed to preserve and enhance the color of the slab. Most sealed surfaces will wear over time and should be resealed every 2-3 years.

**For more information,
visit:
www.DirectColors.com**

